



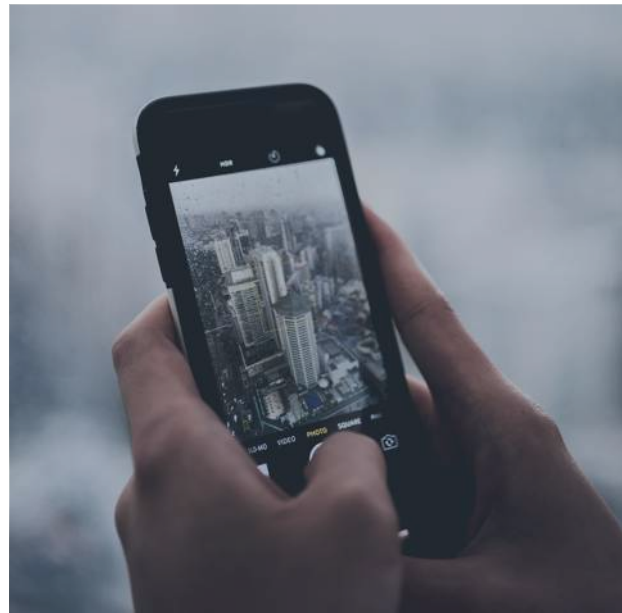
The Power of Unlearning:

Rethinking Education to
Empower Modern Learners

hollis+^{architects®}
r miller



Park Hill School District



Quickly Changing World



An efficient path





Exploring new ideas in education + generations



The background of the slide features a light gray field with several large, faint, overlapping circles. Scattered across the upper half are numerous gears of varying sizes, some in orange and some in dark navy blue. In the lower right corner, there is a solid orange silhouette of a human head in profile, facing right. The title text is positioned to the left of this head silhouette.

Fostering Unlearning

hollis₊architects[®]
r miller

un·learn

verb

Discard (something learned, especially a bad habit or false or outdated information) from one's memory.



Overcoming old habits, uncovering and shifting entrenched ways of thinking, effectively supporting change and discovering new ways to connect and collaborate

Backwards Bicycle Video

<https://www.youtube.com/watch?v=MFzDaBzBIL0>





Path of Least Resistance





Shifting Perspectives

What this means:

Great intentions are sometimes only that

In the face of challenge, fight or flight kicks in

Habits are hard to break



What can we do?



Managing Transitions



Letting Go

Recognizing what is
lost

Neutral Zone

Acknowledging
discomfort of uncertainty.
Identity transformation.

Beginnings

Creating opportunities
for new efforts

- psychological safety
- acceptance of failure
- rethinking assumptions is critical
- challenging & rigorous, but
supportive communities



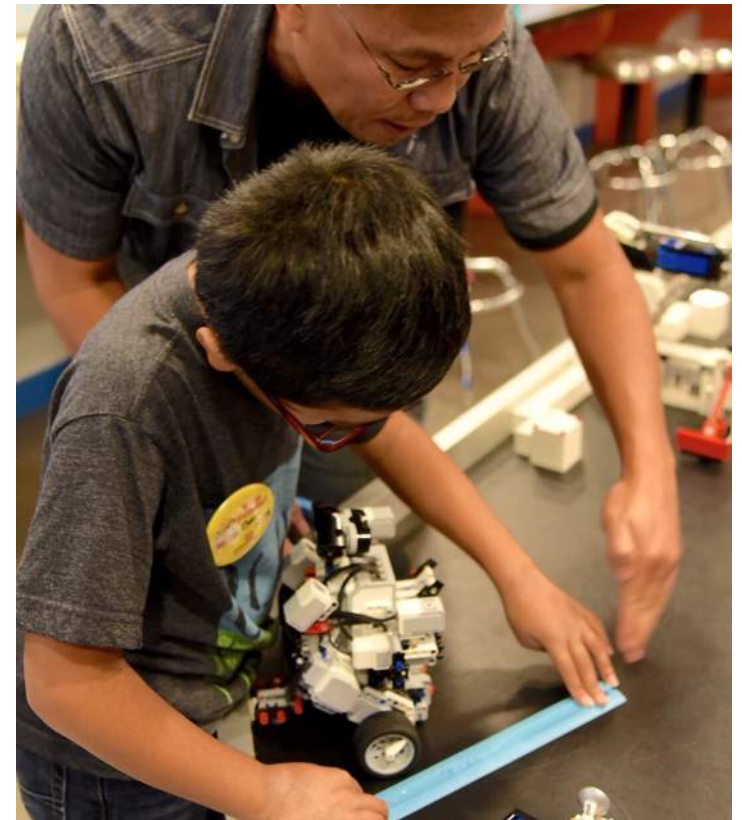
Context Triggers Behavior

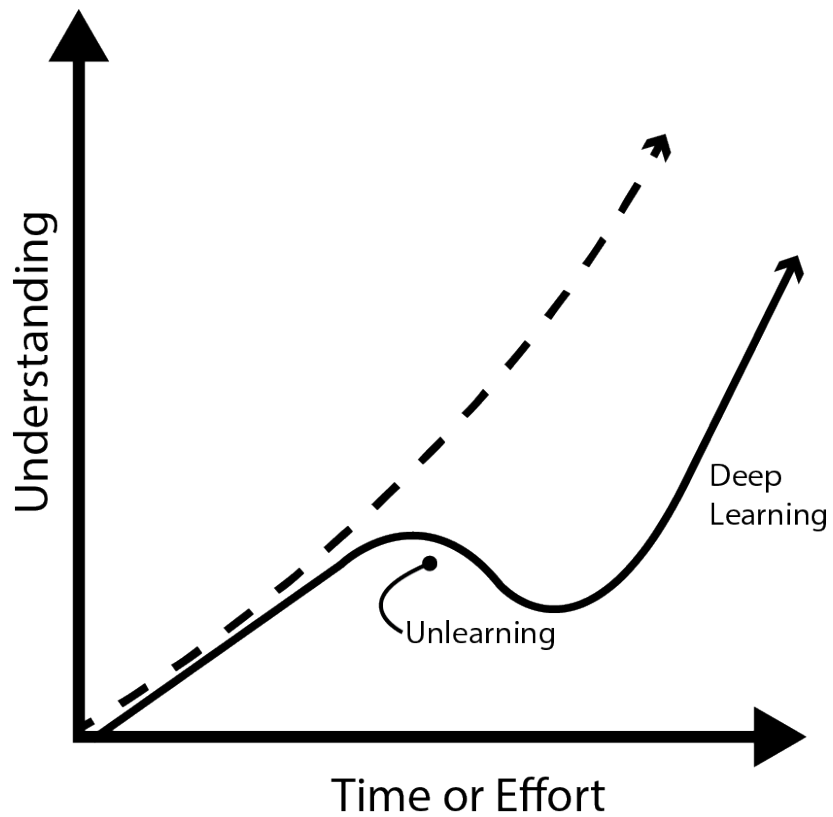




Curriculum

- Experiences are central
- Knowledge distributed across a community





Mindset: Pedagogical Shift



Measuring Learning Quality



OUR SCHOOL
SYSTEM WAS
DESIGNED IN
1893.



Most Likely
to Succeed.



Official Selection 2015
sundance
film festival



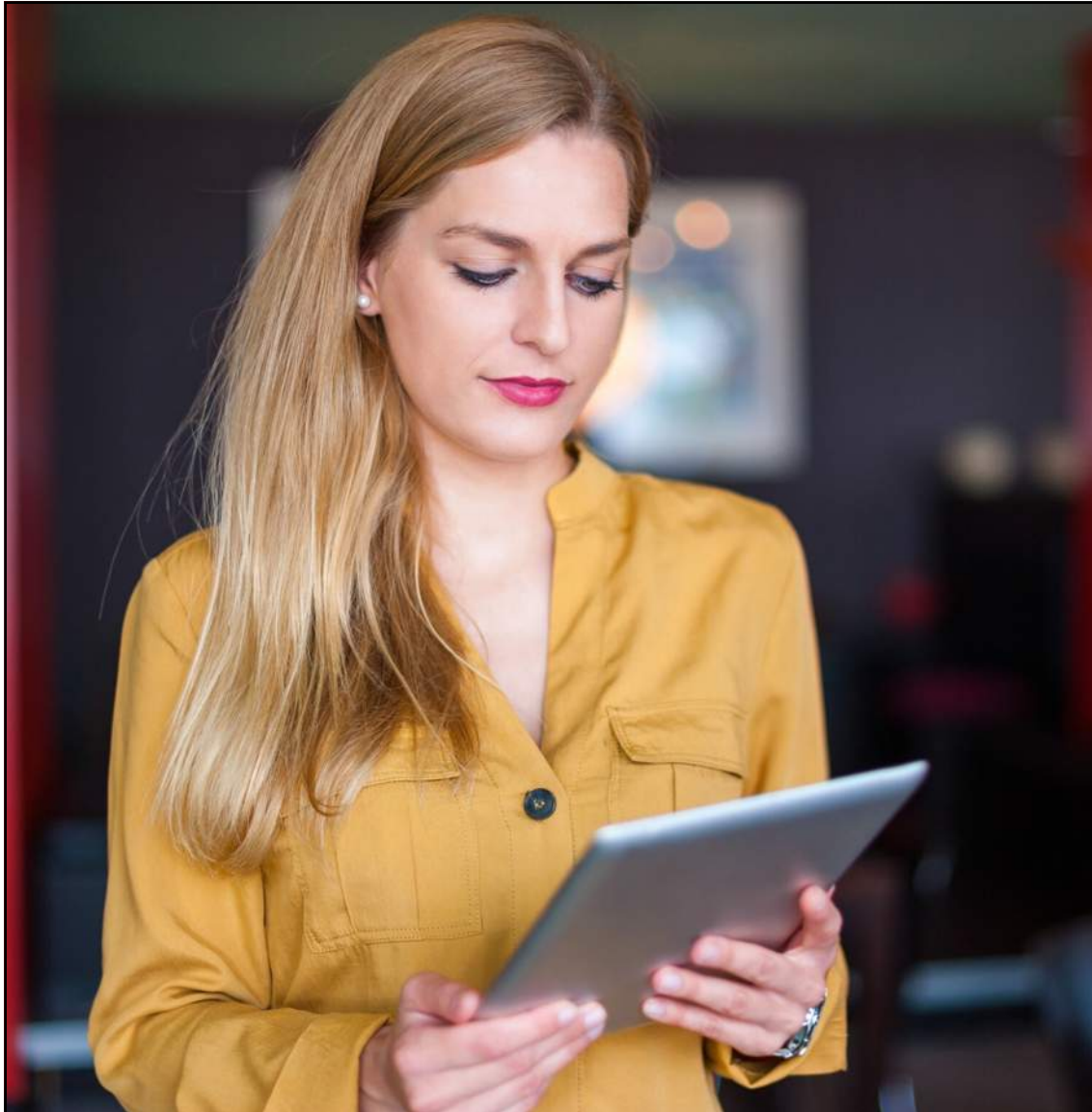
A+



An abstract graphic featuring a light gray background with large, faint, overlapping circles. Numerous gears of various sizes are scattered across the upper half, in shades of orange and dark navy blue. In the lower right corner, there is a solid orange silhouette of a human head in profile, facing right. The title 'A Shifting Generation' is written in white, bold, sans-serif font across the middle-left portion of the image.

A Shifting Generation

hollis₊architects[®]
r miller



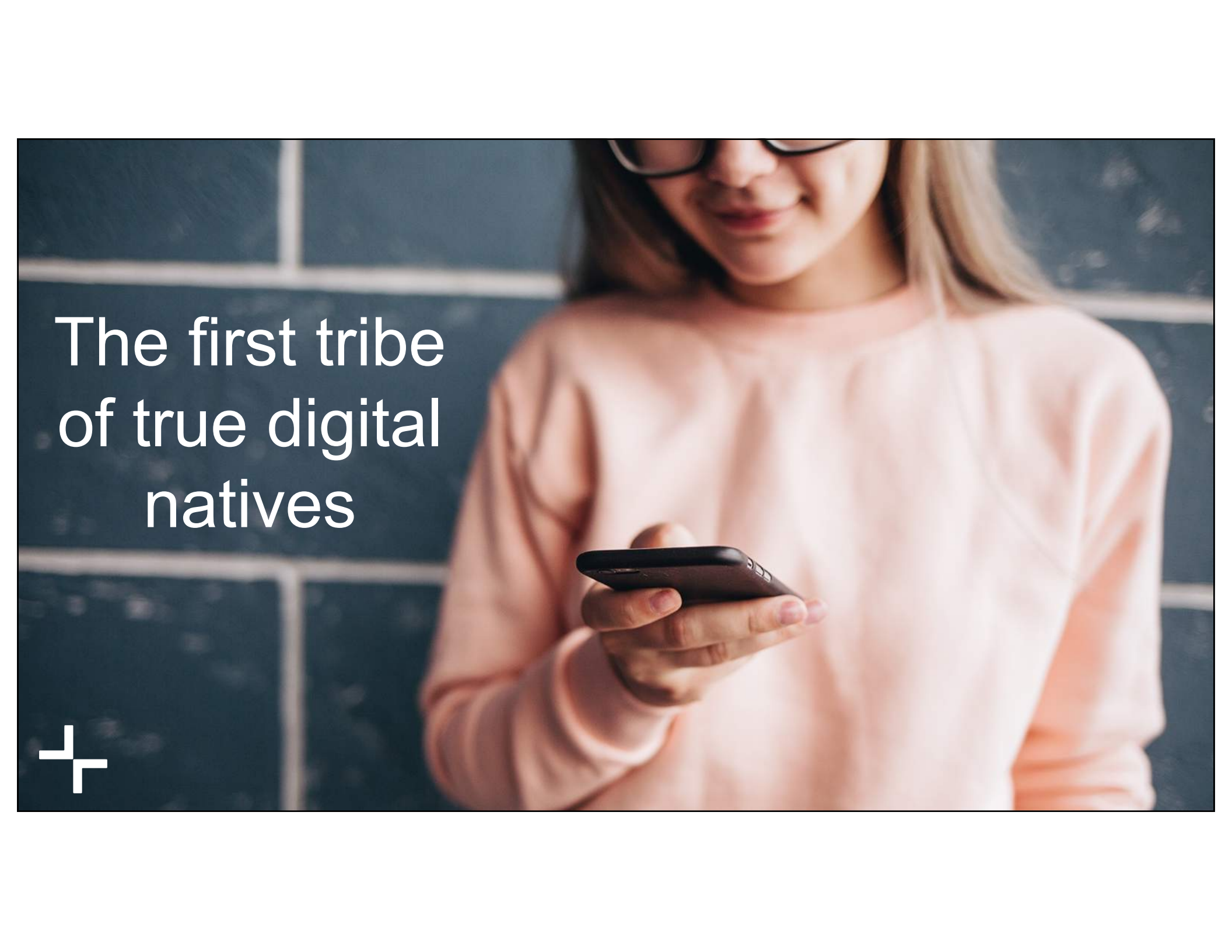
Impact of Millennials: education & business





Generation Z:
Born after 1997 &
under age 18



A young woman with blonde hair and black-rimmed glasses is smiling while looking at a black smartphone held in her right hand. She is wearing a light pink long-sleeved sweater. The background is a dark blue wall with white grid lines, possibly a chalkboard. The text 'The first tribe of true digital natives' is overlaid on the left side of the image in a white, sans-serif font.

The first tribe
of true digital
natives



“They are the most connected,
educated and sophisticated generation
in history. They don’t just represent the
future, they are **creating it.**”

– Mark McCrindle, social researcher



Economy Impact

Used to instability

Have a drive to be nimble



A close-up, top-down view of a green lawnmower sitting on a lush green lawn. The mower is positioned horizontally across the upper half of the frame. It has a bright green body with black accents, including the wheels and the cutting deck. A red safety lever is visible on the left side. The grass is vibrant green and appears to be well-maintained. The overall image has a slightly desaturated, green-tinted aesthetic.

70% of teens are working
entrepreneurial jobs



Sparks & Honey, Gen Z 2025, 2015


A portfolio lifestyle

60% of teens expect to have multiple careers by the time they're 30.



Sparks & Honey, Gen Z 2025, 2015





75% of teens say there are ways
of getting good education besides
college, yet 66% still plan to go.





47% of
teens say
they're an
expert at
something



“We” not “Me”



Putting It Into Practice

hollis₊architects[®]
r miller



WHY?



New generation, updated approach



Think
outside
the
building.

Mindset shift
about how kids
learn and
engage with
the community.



Park Hill LEAD Student Video



PARK HILL SCHOOL DISTRICT

LEAD

Innovation Studio

Lead. Empower. Aspire. Dream.



Research-Based Program



96% of students accepted
at 4 year schools

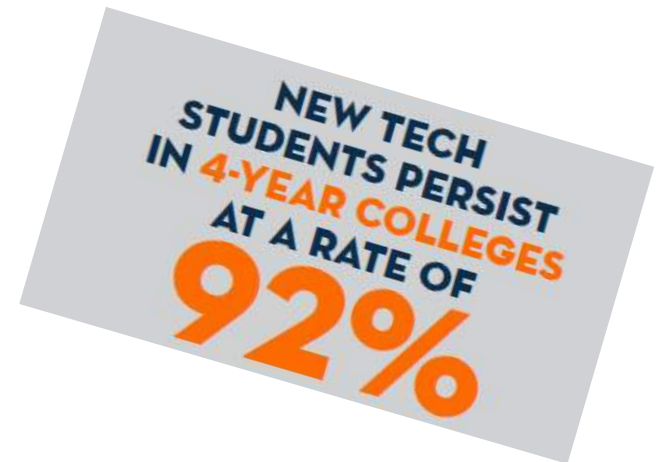


One of...

The 14 most innovative schools in the world
"Business Insider"



COLLEGE AND CAREER READINESS



New Tech Network



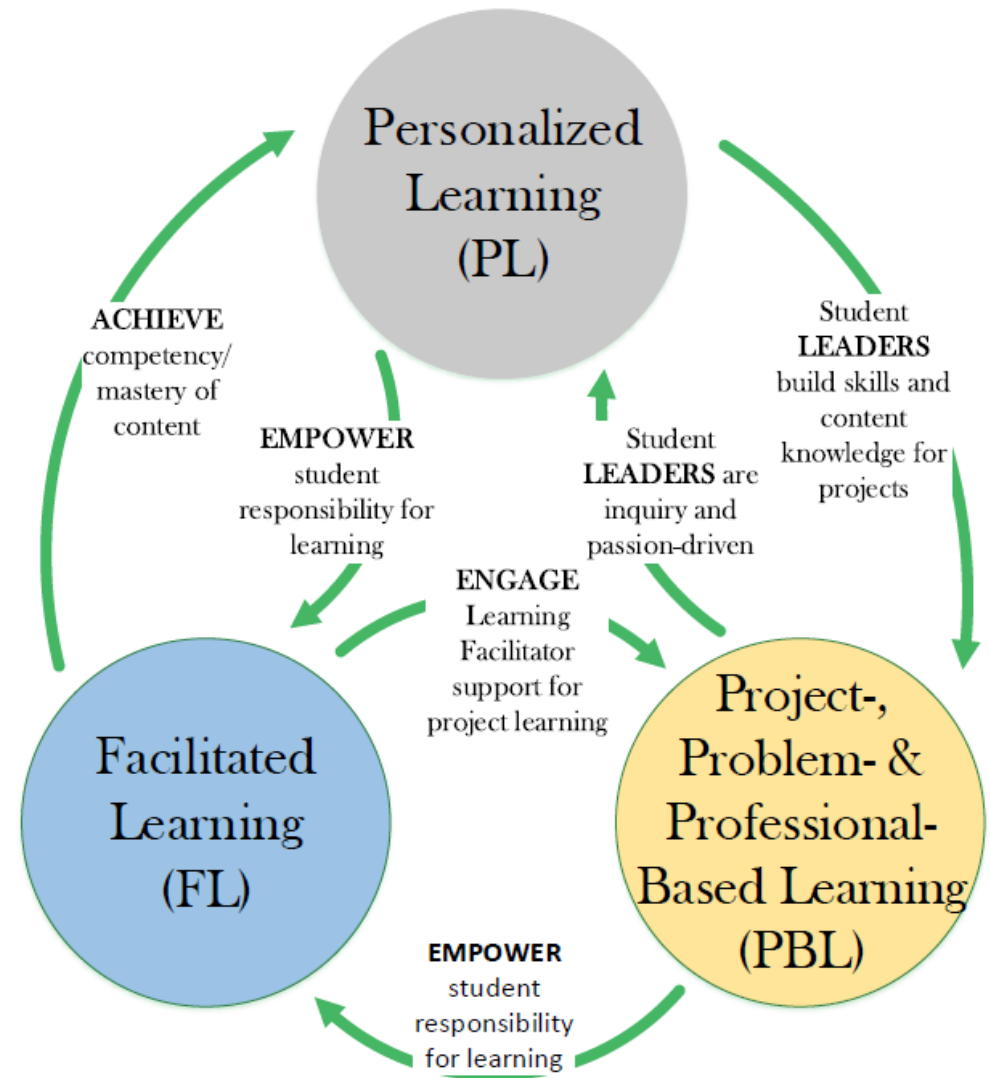


A test kitchen for learning

Flexible & Personalized



Instructional Model





Balancing connectivity





Week in the **life** of a LEAD student



7:30-8:20 Homebase	7:30-8:20 Homebase	7:30-8:20 Homebase	7:30-8:20 Homebase	7:30-8:20 Homebase
8:20-9:40 World History	8:20-8:50 Community Time	8:20-8:50 LEAD Reads	8:20-9:40 ELA I	8:20-9:40 Algebra IA
9:40-11:00 Emerging Leaders	8:50-10:10 Biology I	8:50-10:10 Design Thinking	9:40-11:00 Algebra IA	9:40-10:10 LEAD Solves
	10:10-10:40 LEAD solves	10:10-12:20 PLT		10:10-11:40 PLT
	10:40-11:40 PLT			
11:00-12:30 PLT	11:40-1:00 ELA I	12:20-2:00 World History	11:00-12:30 PLT	11:40-1:00 Biology
12:30-1:00 LEAD Reads			12:30-1:00 Community Time	
1:00-2:38 Algebra IA	1:00-2:38 Algebra IA			1:00-2:38 Foundations of Fitness

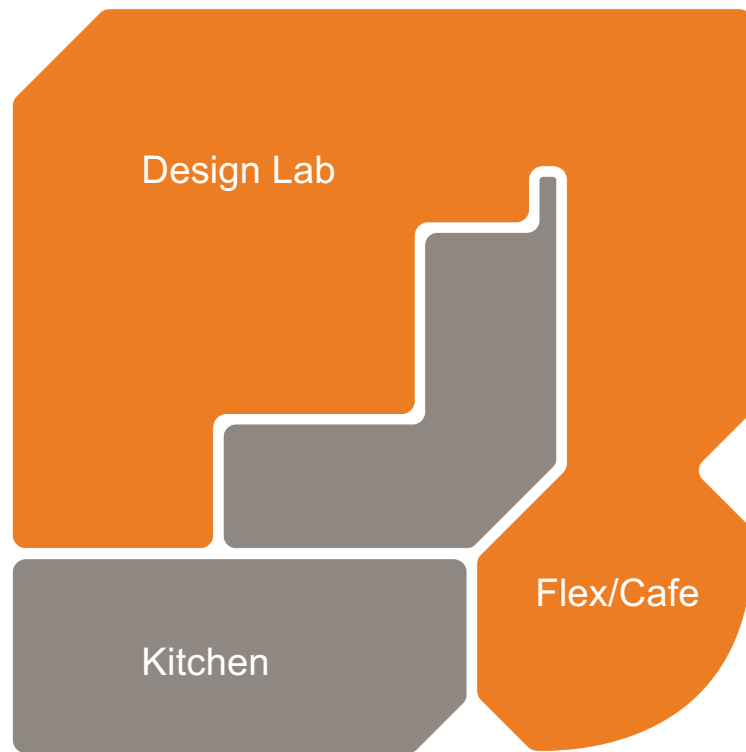




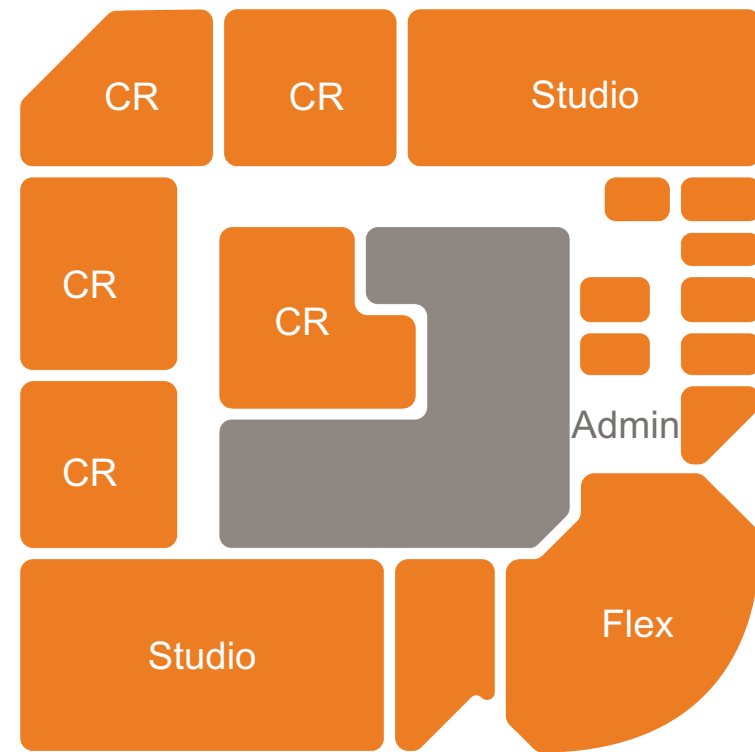
Spatial shift provided
a mindset shift



5th + 6th Floor Areas



5th floor



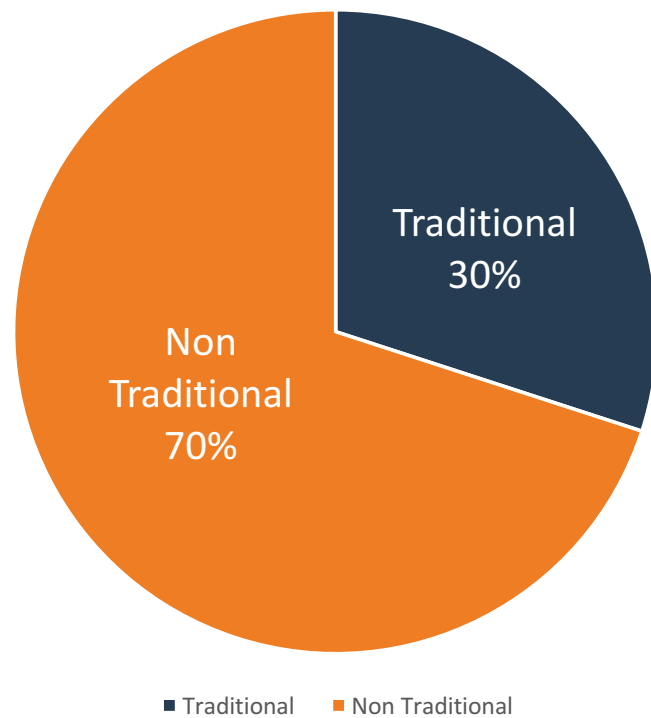
6th floor



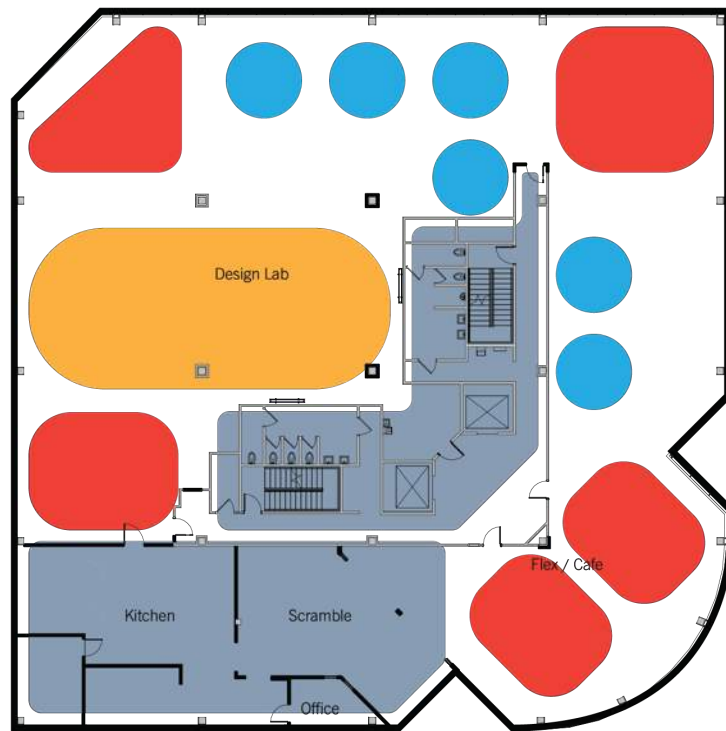
Classrooms to Studios



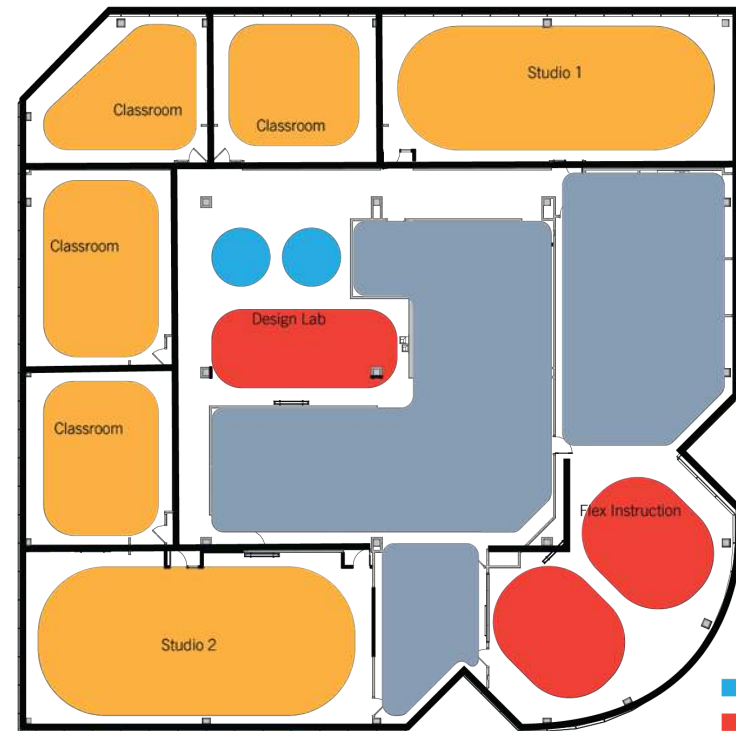
Space Allocation



Group Size Opportunities



5th floor

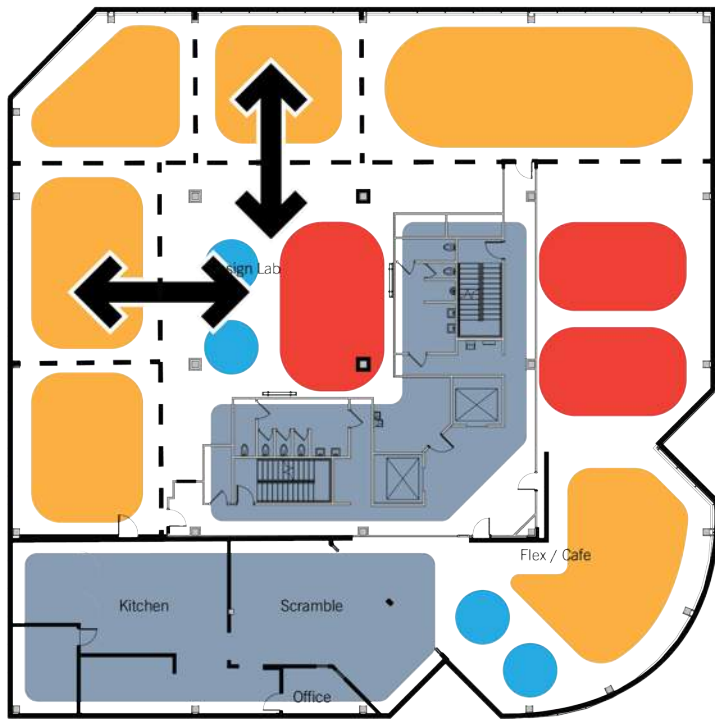


6th floor

- Small
- Medium
- Large



Design Lab Flexibility



5th floor

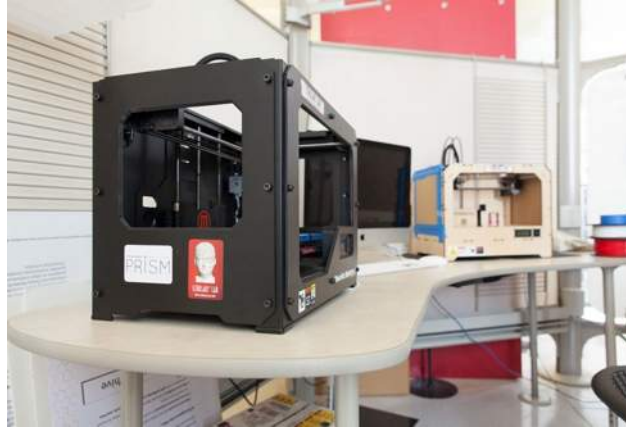


- Small
- Medium
- Large

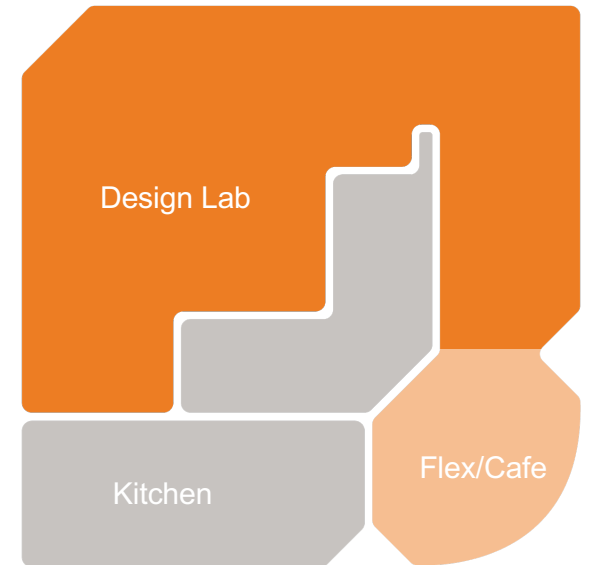


Overcoming Challenges





Design Lab: Keeping it Relevant





Security: An Unlearning Moment

A New Approach



The List Goes On...



Location logistics

Fostering student relationships

Brand and signage

Infinite Campus set-up

Curriculum development

Alignment of Summit curriculum

Innovative furniture

RAPTOR

Transportation schedule

Parent meetings/orientation

Community open house

Staff PD plan

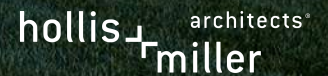
BSIP and BSC

NWEA deployment

Rethinking the first days of school

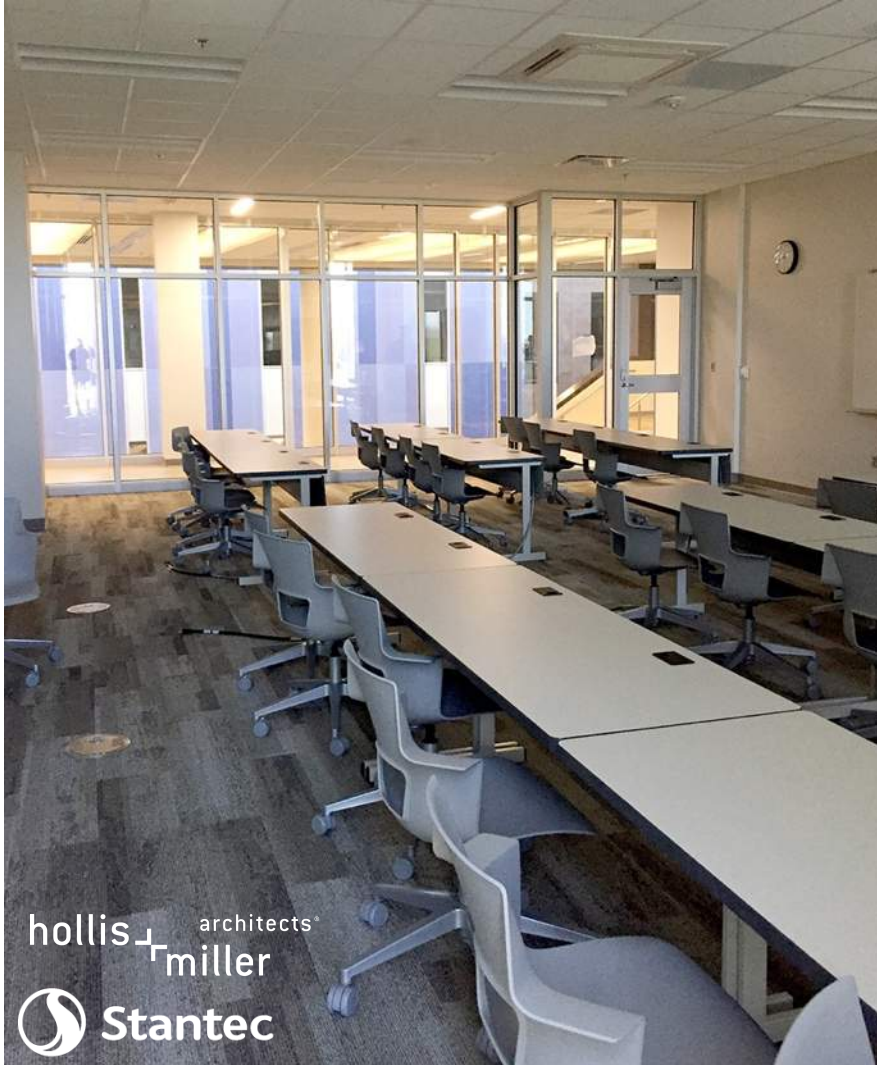
Appropriate student demographics

Olathe West High School







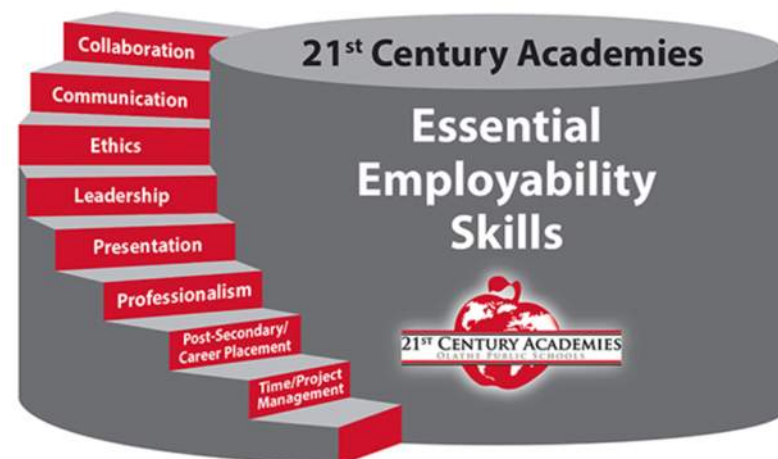


Space
Variety



Incorporated Technology





Olathe Academies: Career Exploration

Green Tech



Public Safety



Open and Accessible Media



Wrapping Up

hollis₊architects[®]
r miller





Leadership



Entrepreneurship



Communication



Digital Literacy



Global Citizenship



Problem Solving



Team-Working



Emotional Intelligence

Future Ready Skills



“The world economy no longer pays for what people know, but for what they can do with what they know.”

– Andreas Schleicher, OECD
deputy director for education



Be Daring

Let Go

Circle Back





Experimentation + Trust



You Can Learn Anything Video
<https://www.youtube.com/watch?v=JC82Il2cjqA>



Thank You!

Michelle Chavey
Hollis + Miller Architects
mchavey@hollisandmiller.com

Jaime Dial
Park Hill School District
DialJ@parkhill.k12.mo.us

hollis architects®
+ miller