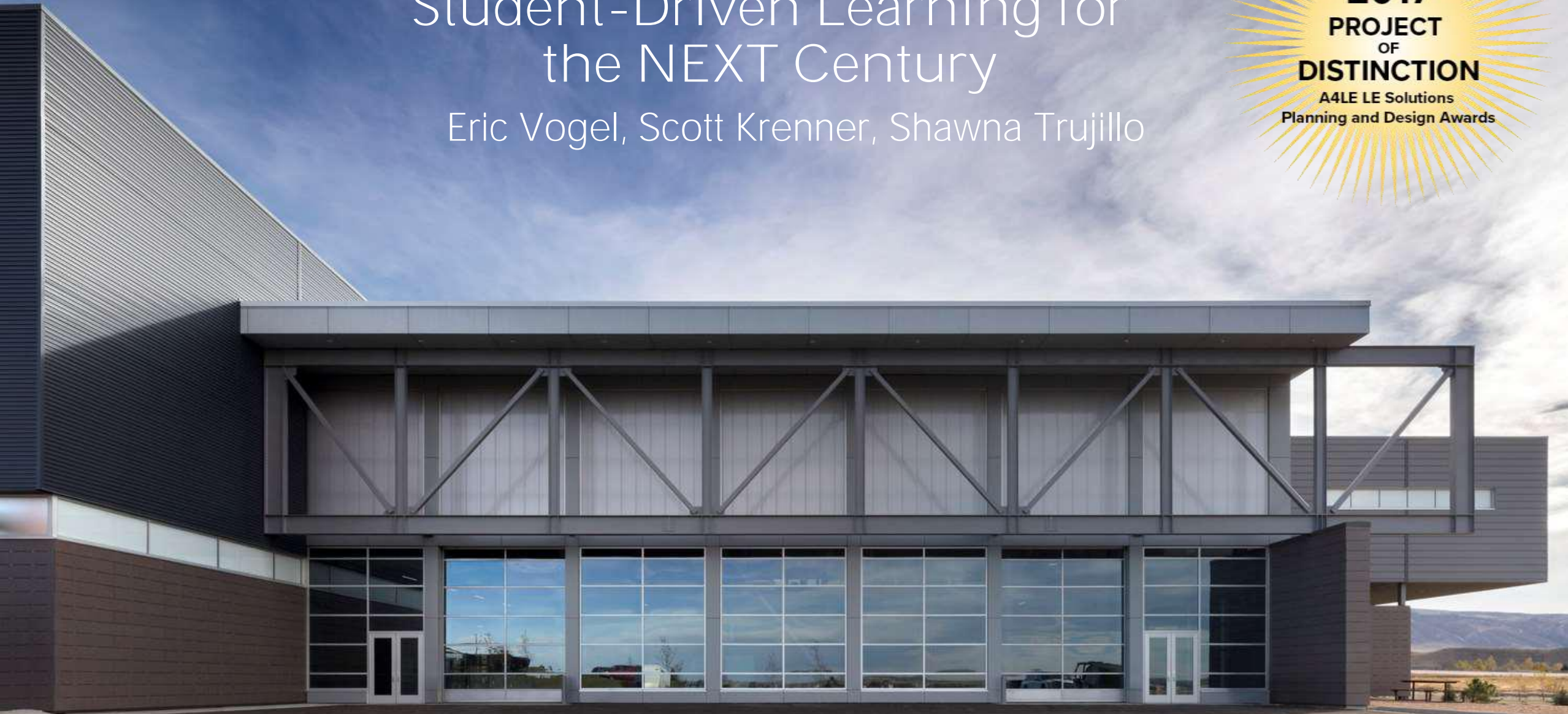


The Innovation Campus: Student-Driven Learning for the NEXT Century

Eric Vogel, Scott Krenner, Shawna Trujillo

2017
PROJECT
OF
DISTINCTION

A4LE LE Solutions
Planning and Design Awards





MOA ARCHITECTURE

Eric Vogel, AIA, LEED® AP
Project Architect

During Eric's tenure at MOA, he has been a principal designer on the firm's most successful and prominent PK-12 projects. His skillset ranges from public outreach facilitation to planning and design, with a thorough analysis of the program and budget, the site context, and the goals and aspirations of the client.



CUNINGHAM
G R O U P

Scott Krenner, AIA
Lead Project Architect

A Senior Associate and Market Group Design Leader for Cunningham Group's Education Studio. He served as Project Architect lead Designer for Pathways Innovation Center/Roosevelt High School. Scott has worked with Cunningham Group for more than 13 years, six of which he has focused on creating innovative design solutions for K-12 schools.




NATRONA COUNTY SCHOOLS

Shawna Trujillo
Roosevelt High School
Principal

Shawna has dedicated the last 23 years working as a teacher and principal. She has worked alongside Jack and Scott to design a building that served as a home for innovative, 21st century learning.

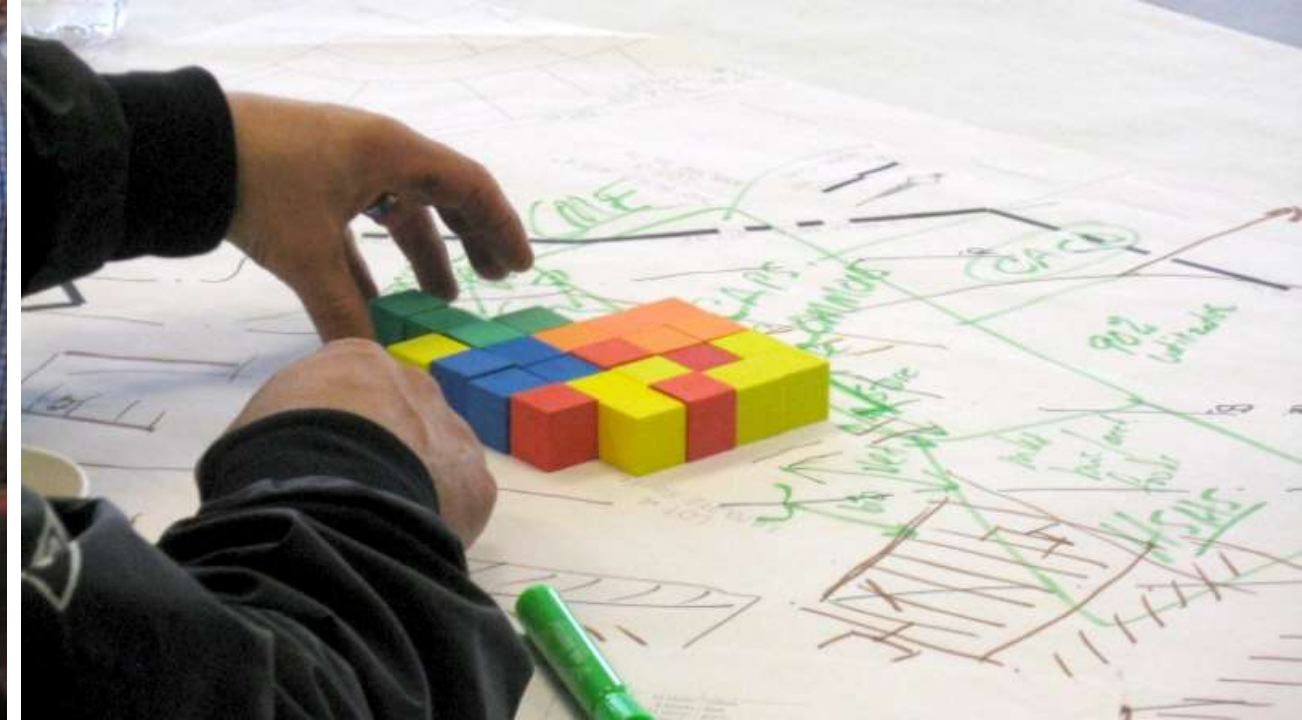
transform

the high school experience

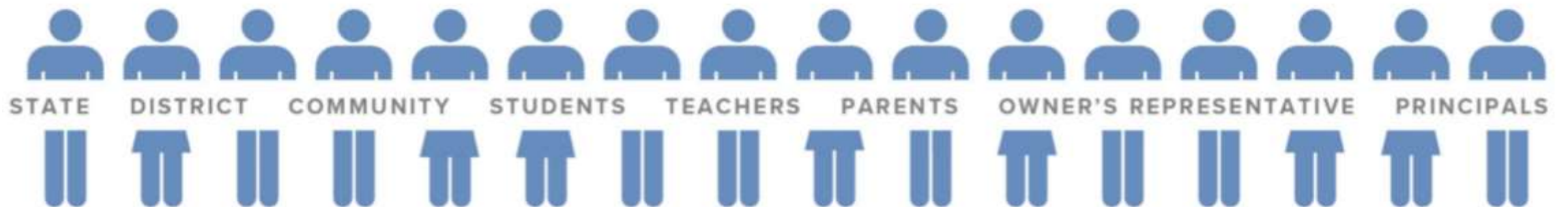


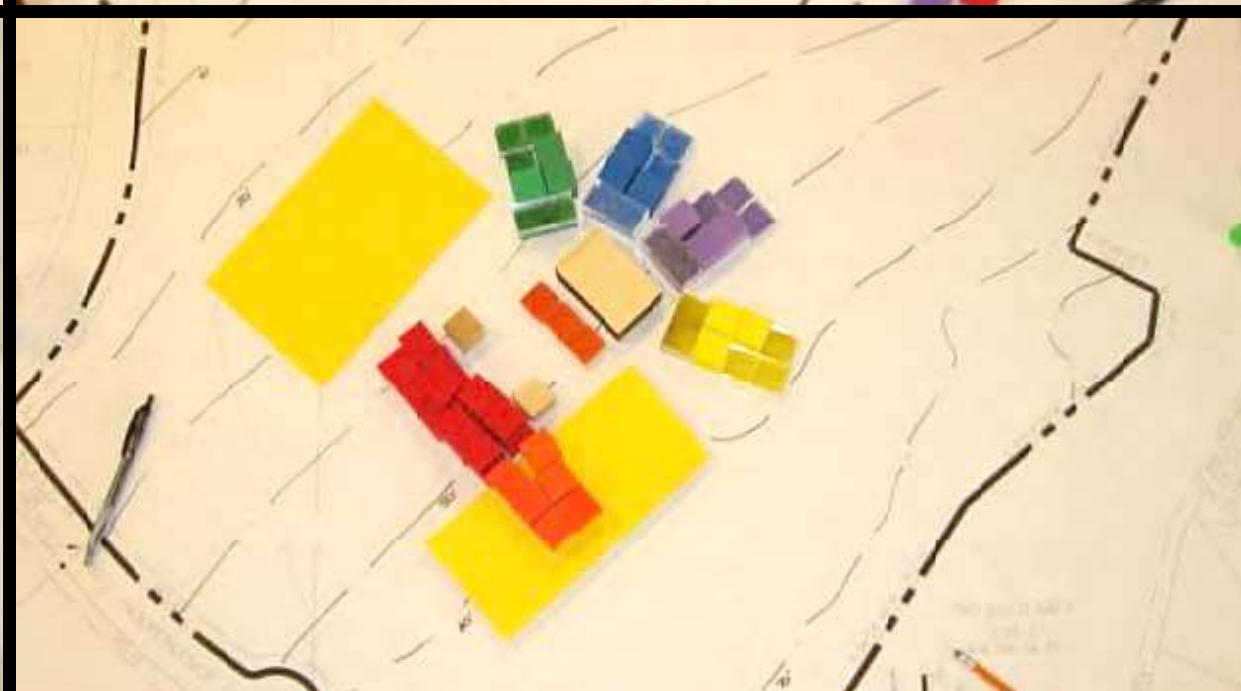
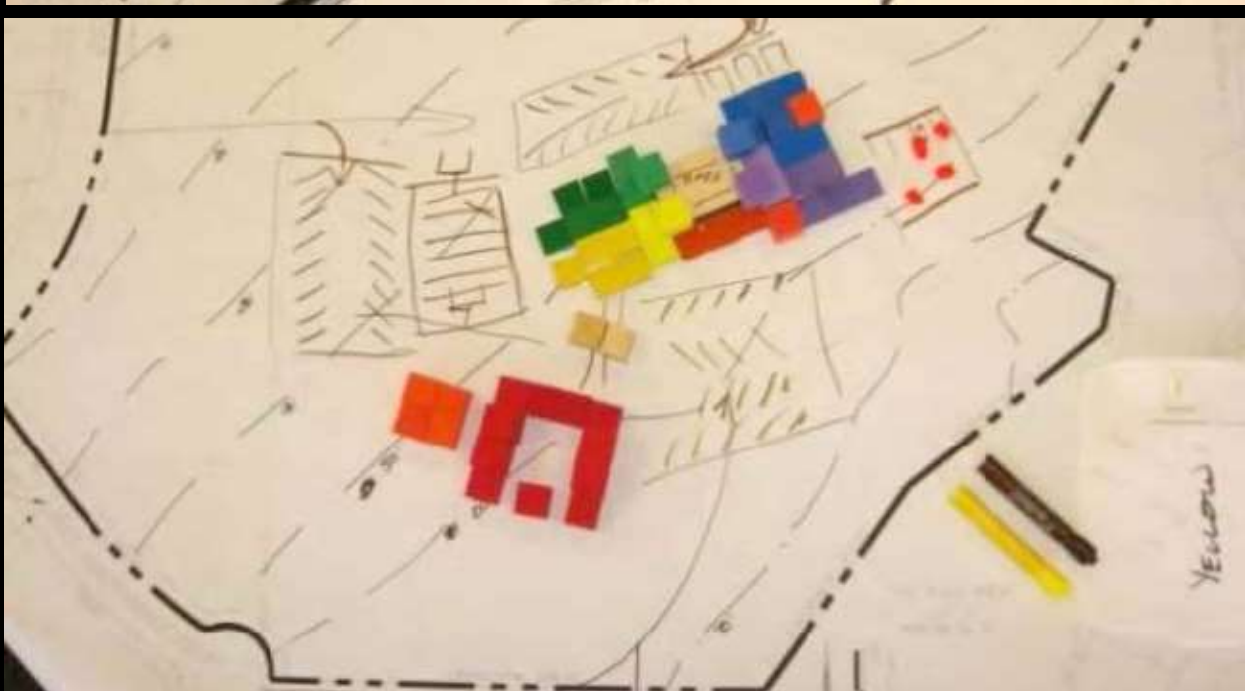
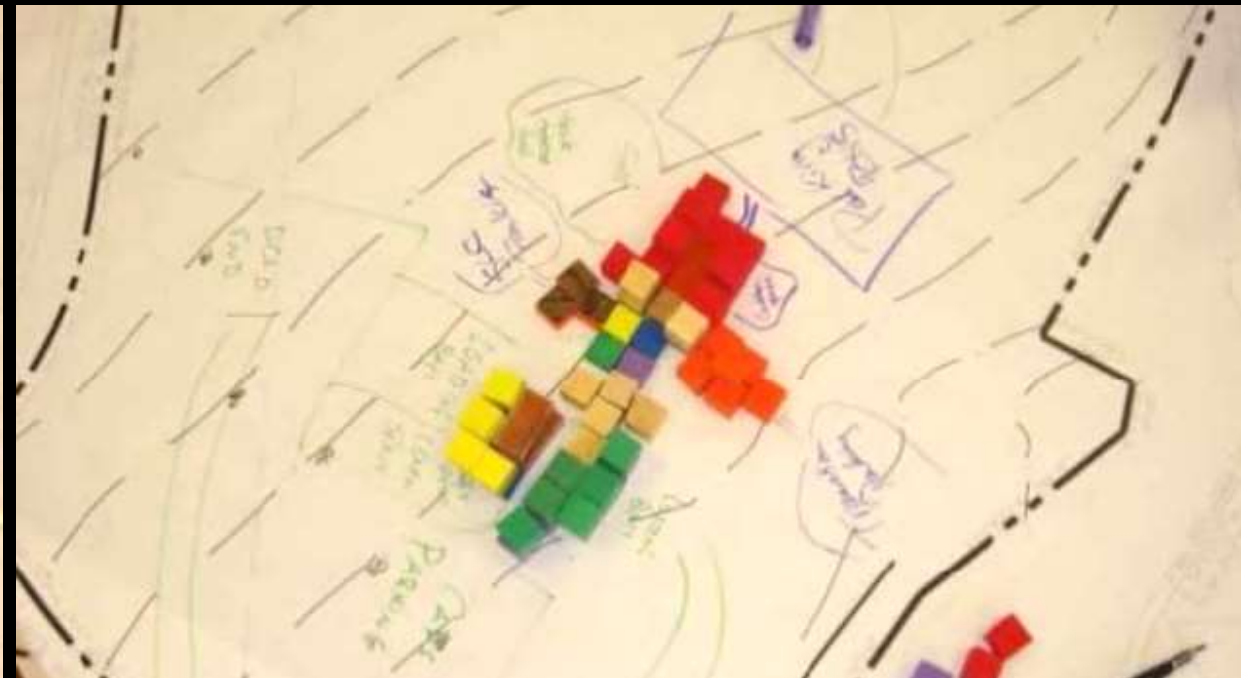
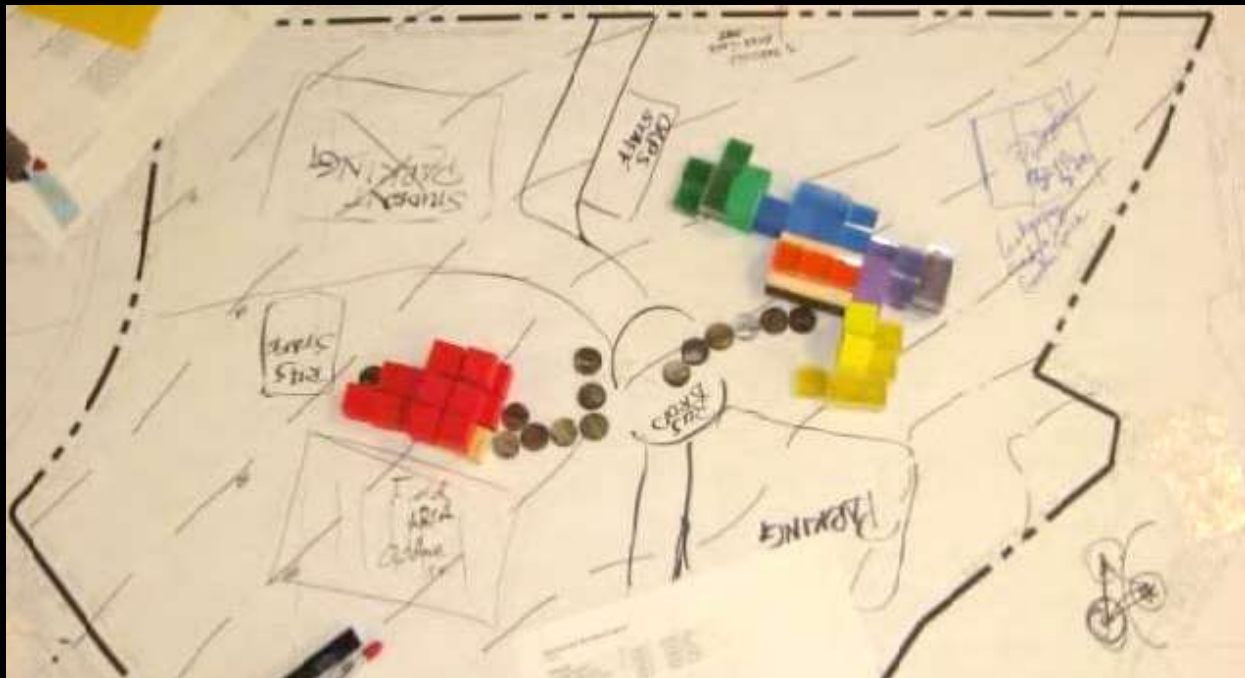
NATRONA
COUNTY SCHOOLS

www.ncsdtransform.org

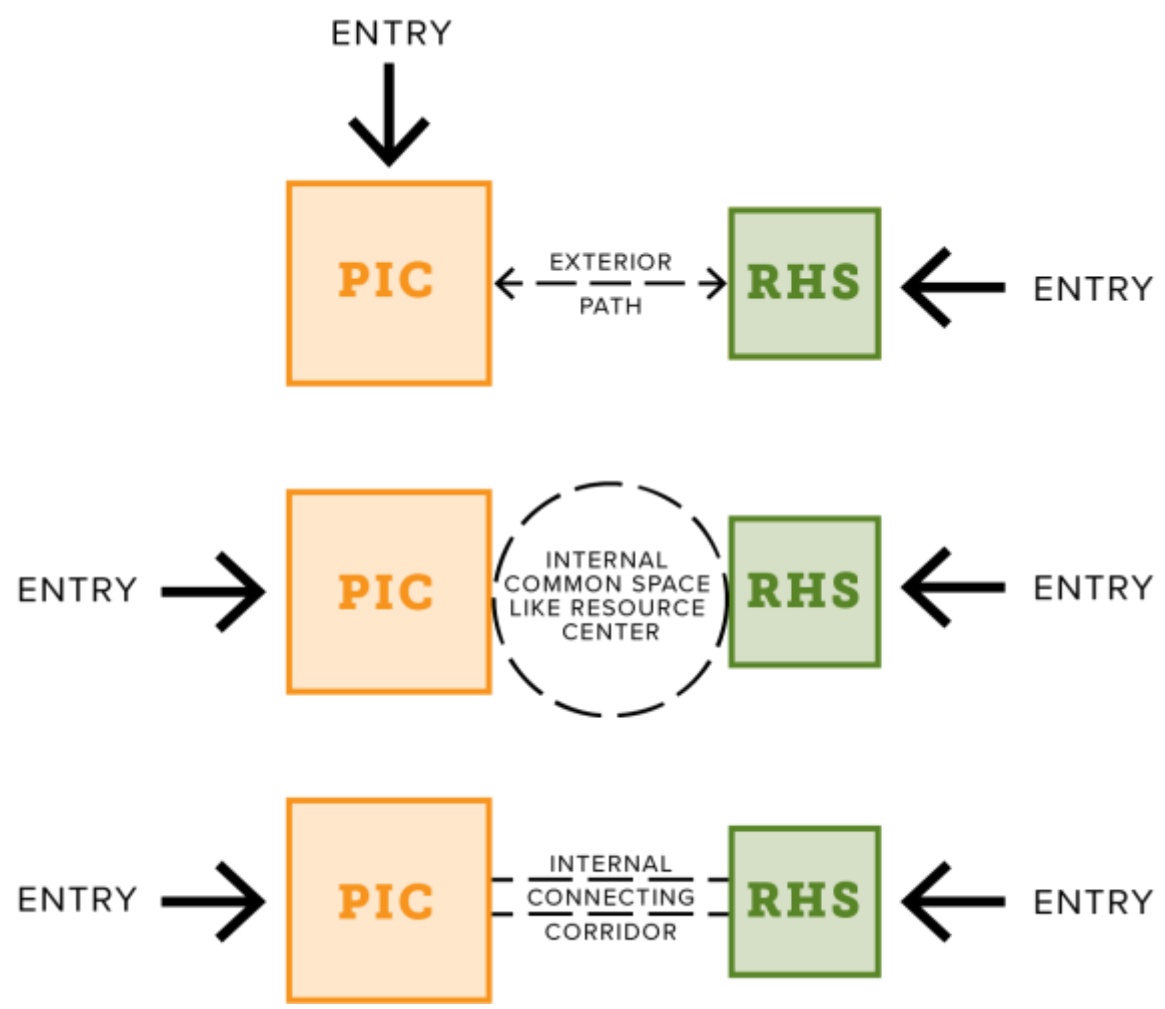


PRE-PLANNING: FOCUSING ON THE STAKEHOLDERS

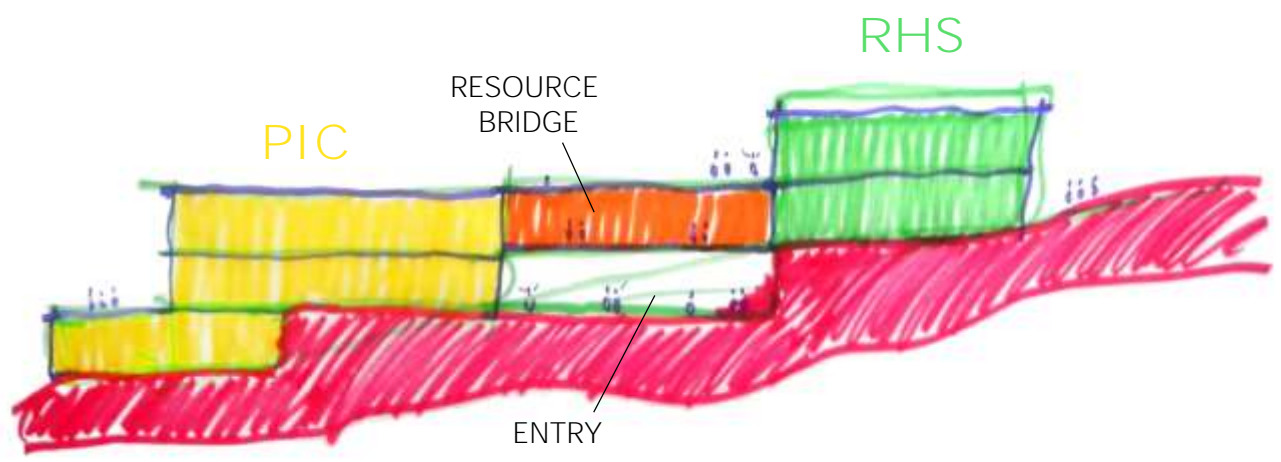




PIC / RHS RELATIONSHIP



CONNECTION OPTIONS





Project Beliefs for Natrona County Schools' Path to 2025

*“To strengthen our
community and our
economy we must instill
a creative, innovative
and even entrepreneurial
spirit in our youth.”*



Profile of a 2025 Graduate:

- Independent Lifelong Learning
- Digital Age Literacy
- Inventive Thinking
- Effective Communications
- High Productivity
- Healthful Living
- Stewardship



A Community Vision

“Education is designed to prepare children for a distant and unbelievable future. Our strategy is to create learning environments that encourage creativity, engaging activities and insightful dialogue. These spaces would allow for the advanced technology necessary to prepare children for success in a world we cannot yet imagine.”

Charter for Natrona County High Schools, resulting from a visioning process with community members, students, parents and district administrators.

“ To change. To morph. To innovate.
To lead by design. To pioneer. To
modernize. To TRANSFORM. ”





Guiding Principals

- Collaborative Learning Communities
- Inventive Learning Settings
- Meaningful Community Partnerships
- A Culture of Empowerment



Roosevelt
High
School

Kelly
Walsh
High
School

Natrona
High
School

PATHWAYS INNOVATION CENTER



Pathways Innovation Center

Individualized, career-focused learning to prepare students for the 21st Century. A new educational academy.

The facility was designed to serve 500 students at each of the three high schools any given time in half-day programs.





ARCHITECTURE, CONSTRUCTION, MANUFACTURING AND ENGINEERING

Woodworking

Cabinetmaking

Welding

Robotics Engineering

Engineering

Electronics/Electricity

Robotics

Biotechnology

Auto Service



BUSINESS, AGRICULTURE AND NATURAL RESOURCES

Business

Marketing

Sports & Entertainment

Nutrition

Food Service

Culinary Arts

Agriculture

Natural Resources

Veterinary Science

Horticulture

Food Science





CREATIVE ARTS, COMMUNICATION AND DESIGN

Production Arts

Computer-Aided Arts

Visual Arts

Web Design

Digital Media Arts

Graphic Design

Color Theory & Design

Film/TV Production

Photography

Graphic Technology

Sculpture





HEALTH SCIENCES AND HUMAN SERVICES

Caregiving

Early Childhood

Development

Nursing

Pharmacology

Sports Medicine

Pre-Occupational

Therapy

Pre-Physical Therapy

Fire Science

English/Language Arts

Psychology

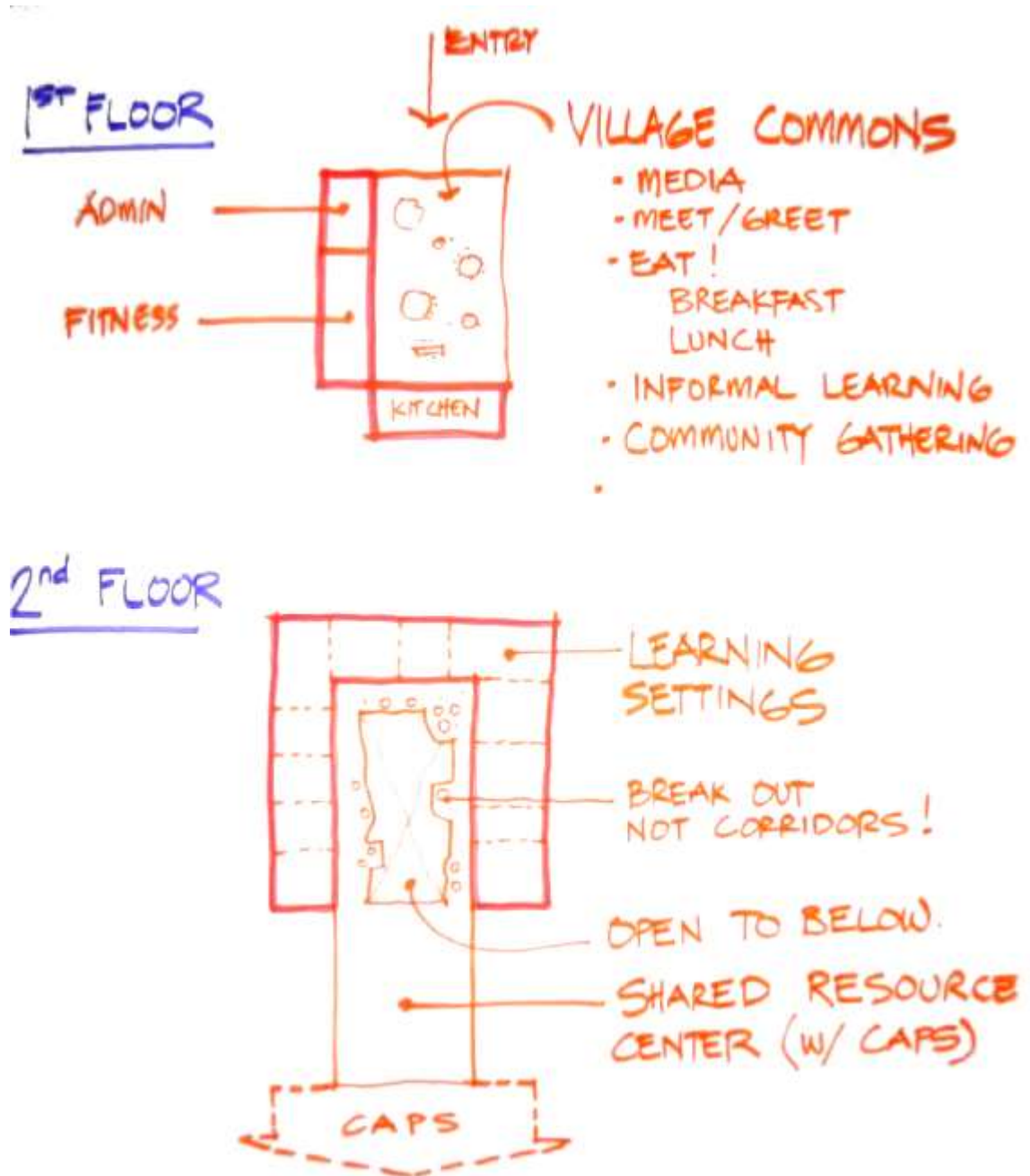
Sociology



Roosevelt High School

The district's alternative high school features a wellness-based curriculum.

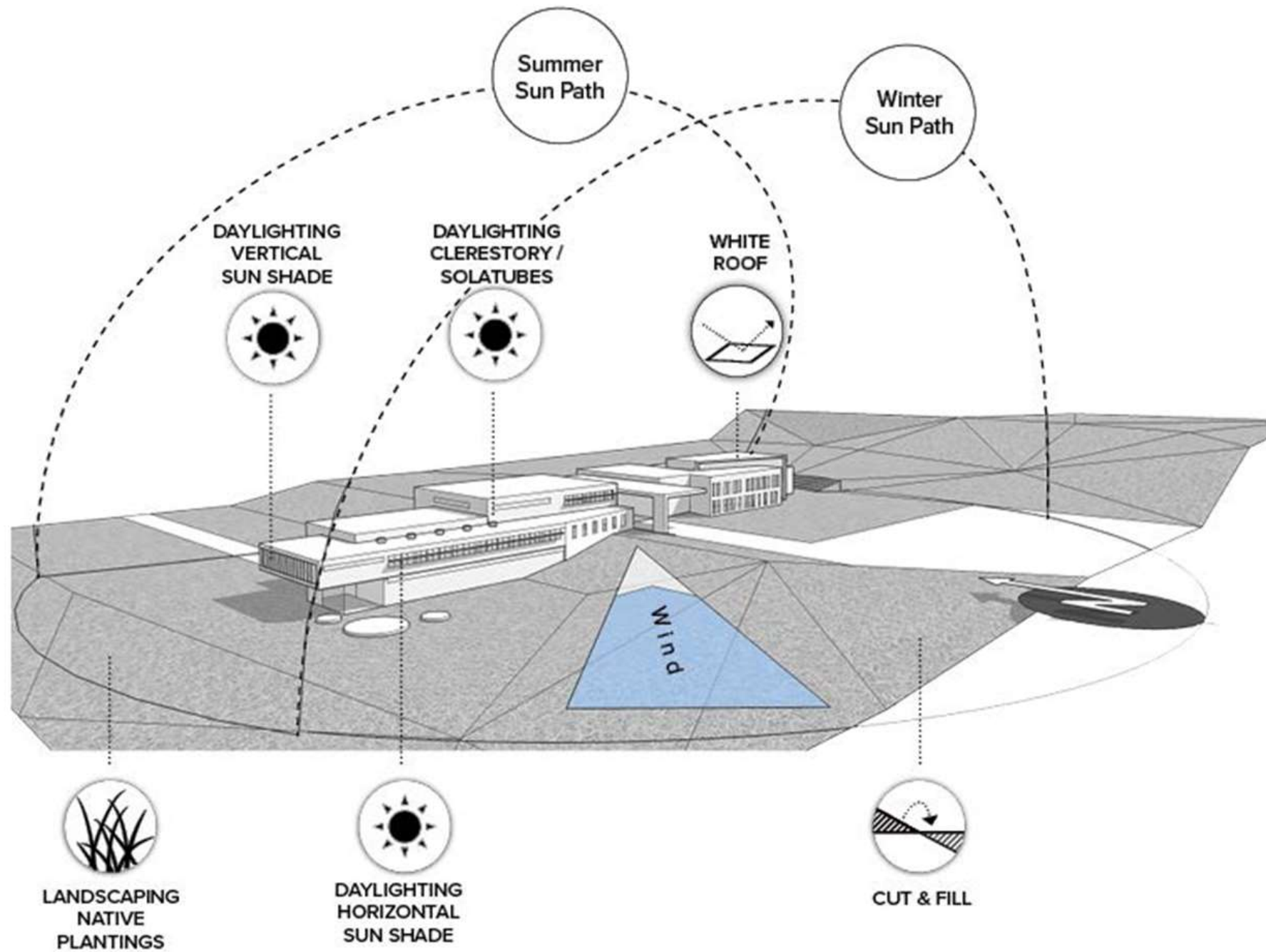
The alternative high school is committed to engaging real-world learning through strong relationships, high expectations and a safe, structured learning environment.





SITE



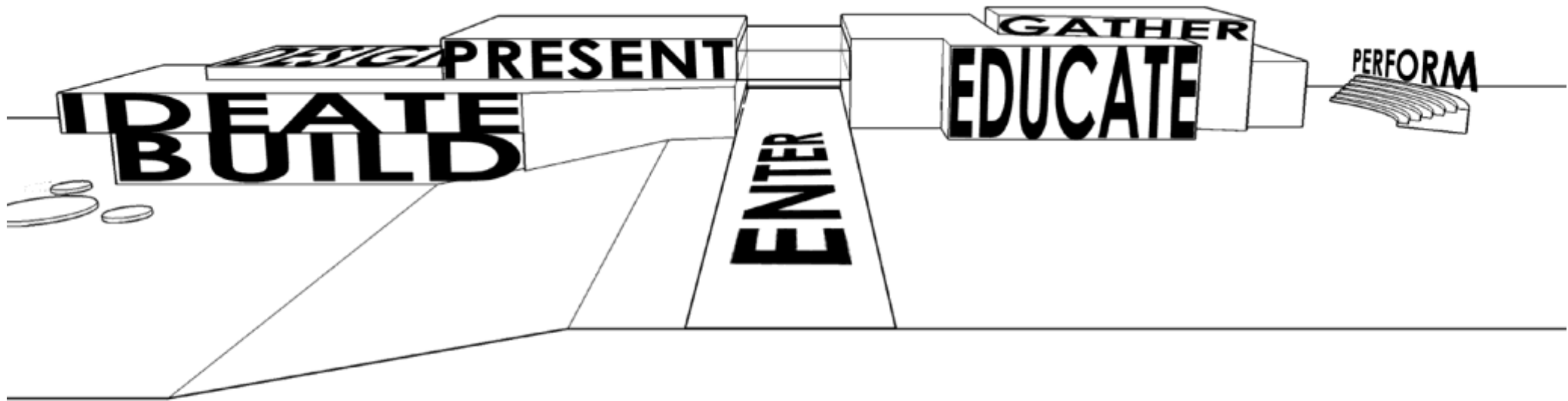




Entry lower view



PATHWAYS + ROOSEVELT HS





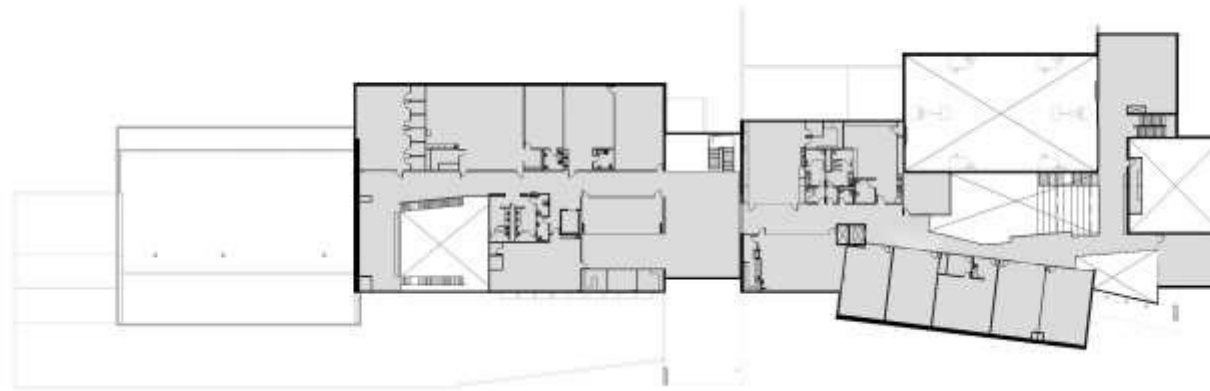




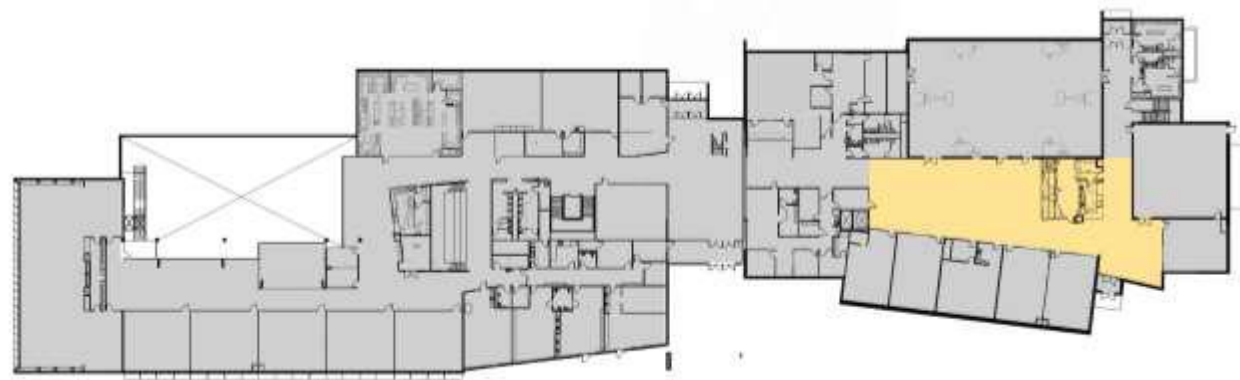




Upper Level



Main Level



Lower Level





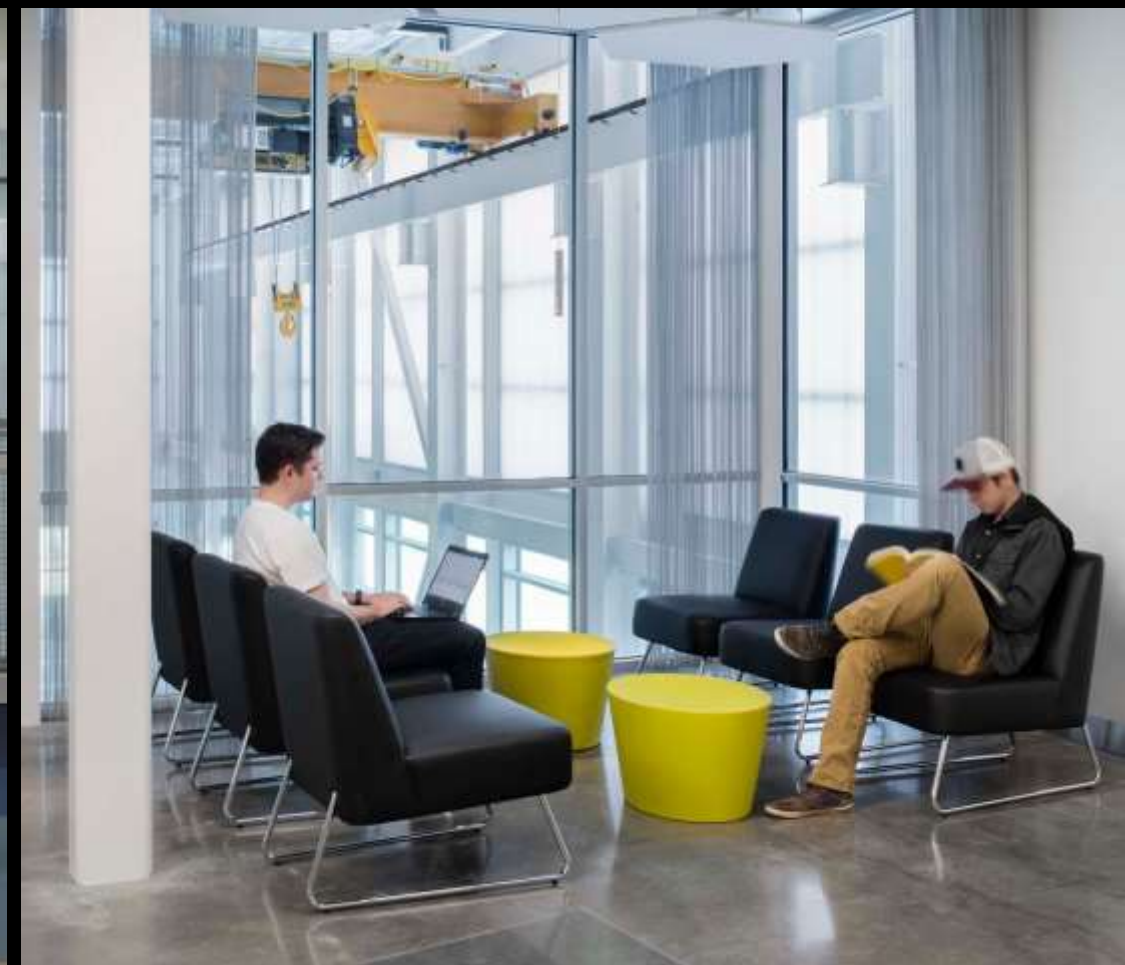














Upper Level

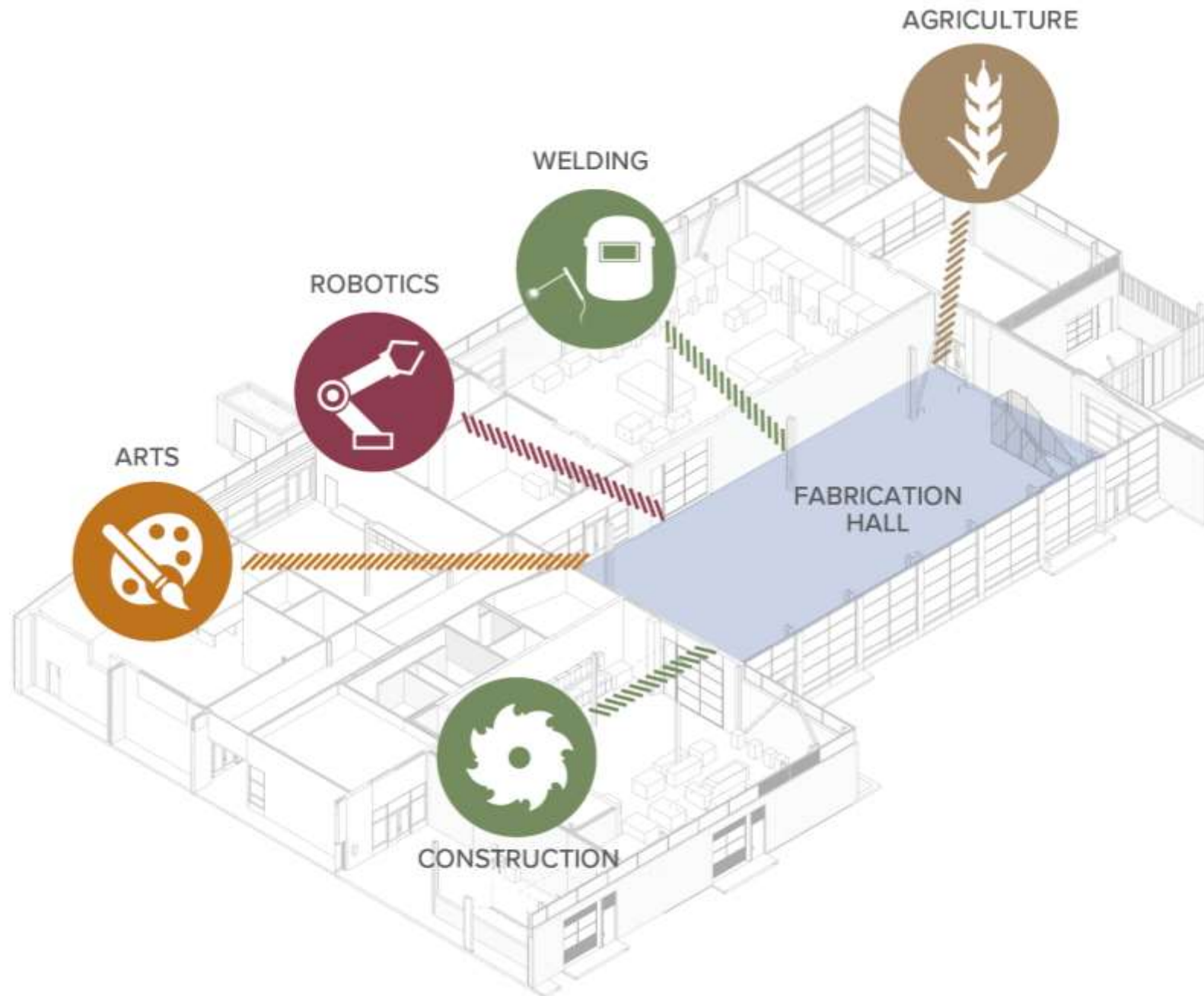


Main Level



Lower Level













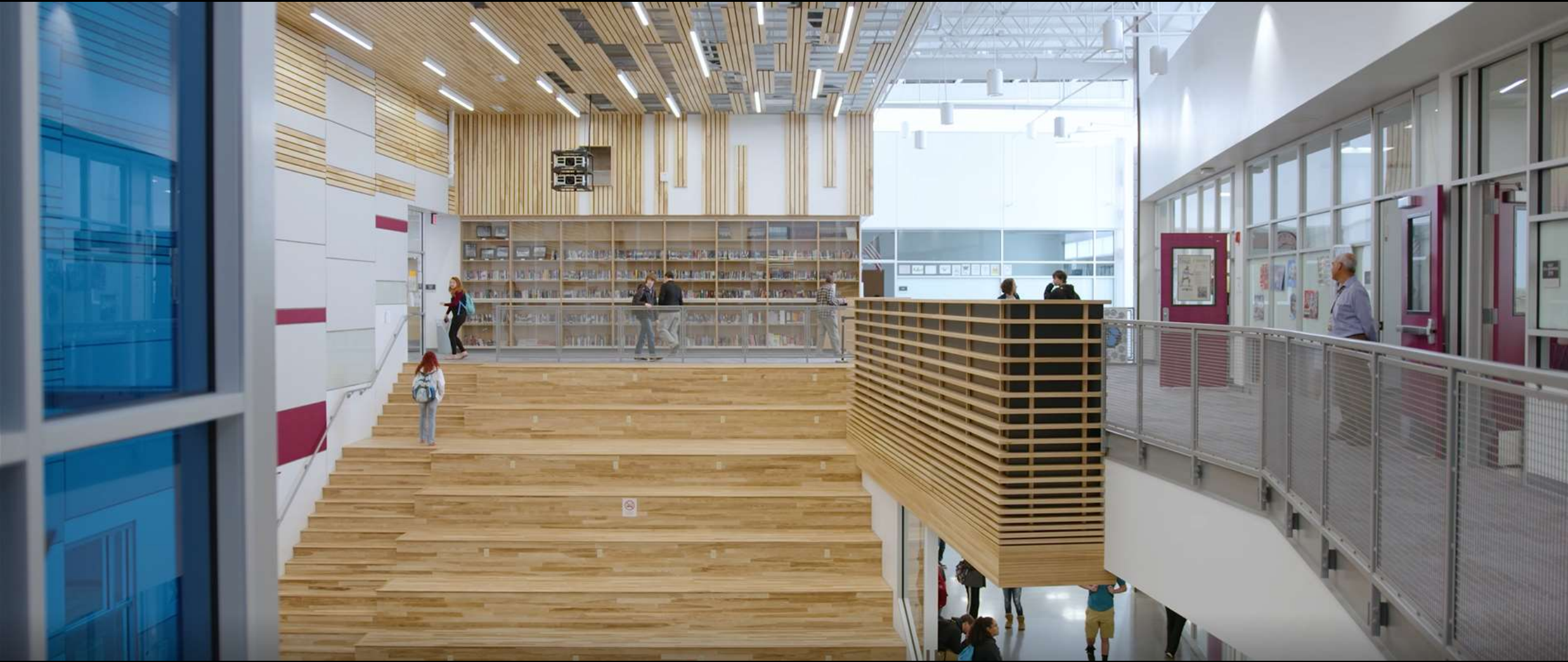














COLLABORATIVE LEARNING





SPECIALIZED LEARNING





STUDENT EMPOWERMENT





Welding students take

AWS

Certification Test

Automotive Students take

ASE

Certification Test

Nursing Students take

CNA

Certification Test



ELEVATION OF TEACHING AND LEARNING





MOA ARCHITECTURE

moaarch.com

Eric Vogel, AIA, LEED® AP
Project Architect
evogel@moaarch.com



CUNINGHAM
G R O U P

cunningham.com

Scott Krenner, AIA
Lead Project Architect
skrenner@cunningham.com



NATRONA COUNTY SCHOOLS

natronaschools.org

Shawna Trujillo
Roosevelt High School Principal
Shawna_Trujillo@natronaschools.org

